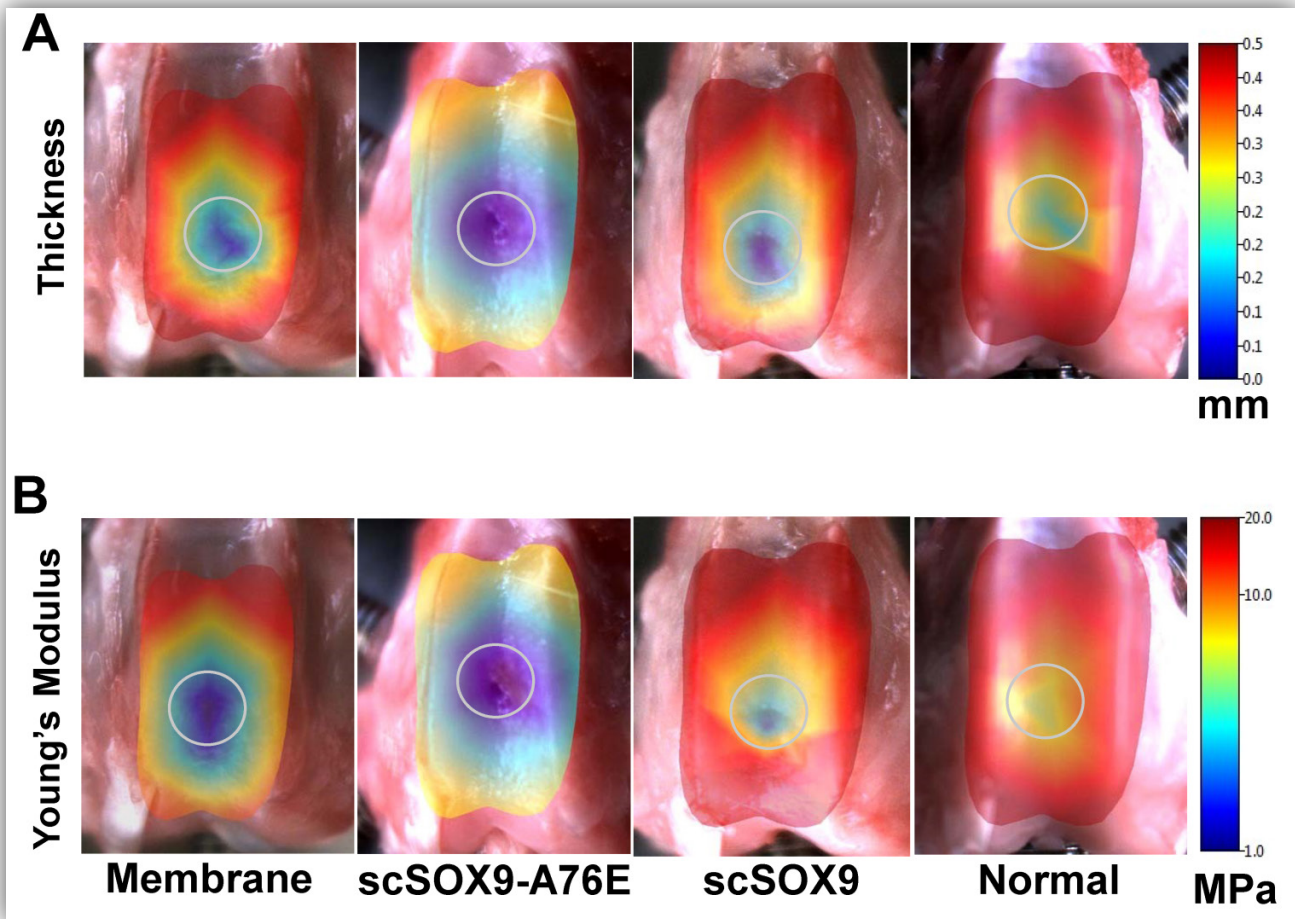


# International Journal of Medical Sciences



**COVER FEATURE:** Xiaowei Zhang, Shili Wu, Yong Zhu, Cong-Qiu Chu. Long-term durable repaired cartilage induced by SOX9 in situ with bone marrow-derived mesenchymal stem cells

ISSN 1449-1907



9 771449 190003



IVYSPRING  
INTERNATIONAL PUBLISHER